

January 2012

Volume 7, Issue 5

Meeting

January 13

Laguna Presbyterian
Church

Tankersley Hall

415 Forest Ave.

Laguna Beach

Social 9:30 a.m.

Meeting:

10 a.m.—Noon.



It's All of Our Beeswax

with speaker Lynne Gallagher

The Plant Table

had an amazing day of sales at our last meeting thanks to your many donations and of course the loyal buyers!

\$364!



Welcome! New Members

Judie Michael

Rhonda Kinn



In most places in the USA bees are out of sight and out of mind in mid-January. Not here in Laguna Beach. If you've got something in bloom, especially a fat rose, chances are you'll see a honeybee gathering nectar and pollen to take back to her hive. Yes, they're all gals. So what better time than Friday, January 13 for Lynne Gallagher of The Bee Ladies to speak to us about bees' habits, bee-keeping, and the importance of bees to agriculture and the environment?

Remember the old expression "It's none of your beeswax."? People would say that to deflect nosey personal questions. Well, Lynne will tell us that it IS our BEES-

WAX to know what we can do in our gardens to support local honeybee and other pollinator populations. Unfortunately, even some organic products are harmful to bees. She'll tell us what products to use and what to avoid.

As a beekeeper, Lynne has a line of products such as honey and royal jelly, which she sells at farmers' markets around Orange County. She'll talk to us about the health benefits of bee products and offer a variety of The Bee Ladies honeys and other bee by-products for sale after the meeting. Please bring cash or a checkbook if you'd like to make a purchase.

Tankersley Hall will be buzzing on January 13. See you there!



LBGC

Directors
2011-2012

Lecia Davis
President

Patricia Weier
1st VP, Programs

Arline Moran/Sue Goldberger
2nd VP,
Publicity/Web site

Shirley Forden
3rd VP, Ways & Means

Nancy Englund
3rd VP, Garden Tour

Polly Dix
4th VP, Membership

Jeanne Yale
Recording Secretary

Ruth Robertson
Corresponding Secretary

Pam Luttrell
Newsletter

Vernetta Crandall
Treasurer

Maggie Siegel
Financial Secretary

Joyce Conway
Past President

Weeder's Digest is published monthly
from September through May for the
members of the Laguna Beach Garden
Club.

Pam Luttrell, Editor

Additional information
about club activities is available at our
web site
www.lagunabeachgardenclub.org



January 2012 Green Thumb Project CENTERPIECE/GARDEN ART

Natalie Harlow will show us how to make a beautiful centerpiece, or it could also be used as garden art.

She will show us how to attach mondo grass to a piece of wood that you will embellish with marbles and glass, and into that set a potted plant.

And look at the beautiful result.

- ◆ **When:** Friday, January 20
- ◆ **Time:** 9:30am
- ◆ **Where:** 387 Cypress Drive, L.B.
- ◆ **Cost:** \$20
- ◆ **Note:** Further details will be available when you sign up at the January meeting.



Calling New Members, Old Members, All Members

The Laguna Beach Garden Club will have several openings on the Board of Directors next year, if you've ever thought you might like to participate in, and help drive, the direction of the garden club here are the positions that will be open for 2012—2013 :

- ◆ President
- ◆ Programs
- ◆ Publicity
- ◆ Ways and Means
- ◆ Financial Secretary



If you want to know what each of these jobs entail, contact Lecia Davis our President, or the person who does the job now, they will be pleased to share their insights and the duties relating to their specific office.

Tours & Travel with Madeleine Visca



This month we will combine a members tour with a travel tour as we visit two of our members gardens plus a special invitation to view a hillside garden (not belonging to a member), which is just spectacular, and then we will head off for beautiful and ever changing Sherman

Gardens in Corona Del Mar. Lunch will be available at the Café Jardin on the garden grounds by reservation, so if you intend to dine there you must make your own reservations, the phone number is (949) 673-0033. There are many other local eateries in the immediate area, as well as at nearby Newport Fashion Island for your lunch. We will meet to carpool at the parking lot for the First Church of Christ, Science (at the corner of High Dr. and Rose Place), at 9:15 a.m., leaving for the first garden at 9:30 a.m. As always, wear comfortable shoes as gardens are not always flat!

There is a small donation to enter Sherman Gardens of \$3.00.

For further information call Madeleine at 949-494-7307.



One kind word can warm three
winter months.

~Japanese Proverb



Corrections for membership book:

For Sherry Stephens sstephens1@cox.net

For Brooke Taylor brooker-t2@cox.net



**You Signed Up
to bring food for the
refreshment table on**

December 9

Patricia Weier

Pat Acree

Maggie Siegel

Linda Humes

Pennie Levers

Mary Paulsen

Nancy Moler

Synthia Scofield

Dorothy Cavanagh

Diana Lannon

Donna Nielson

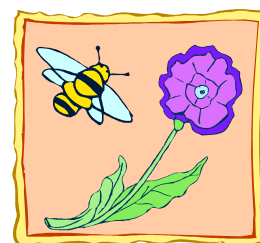
Sandra Weir

Centerpiece for Table

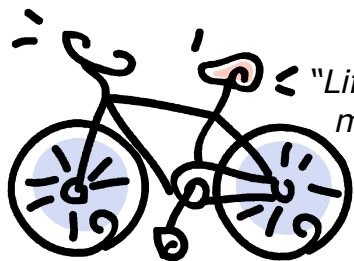
Elizabeth Kramer

Please arrive by 9:15 am
with your goodies.

Thank you!



PATRIOT'S DAY PARADE

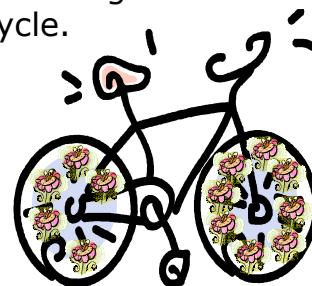


"Life is like riding a bicycle—in order to keep your balance, you must keep moving."

~Albert Einstein

Okay, Gardeners! Listen up! Instead of having a vehicle to decorate with flowers for the Patriot's Day Parade, March 3rd, this year we're going to decorate bicycles! The theme of the parade this year is "Never Forget." Well, one never forgets how to ride a bicycle, right? We're stretching the meaning of the theme, we realize . . . Still, what we need from you is your bicycle. We would like to have 12 or so of them. We're not going to ride them—just push them and do our moving "drill."

So, dust off your "green" transportation and pump up the tires. Let Gayle Whitaker or Diane Klope know if you would like your bicycle to be in the parade. It'll be fun!



Club and District Dates to Remember this month

- ♦ **Wednesdays, Every Month 9:30 a.m.—12 p.m.**—Weeding at Hortense Miller Garden every Wednesday, come join the gang and get your hands dirty for a good cause! Contact Nancy Kirschke for details—494-6693.
- ♦ **Friday, January 13, 9:30 a.m.—Monthly Meeting**, at Laguna Presbyterian Church, 415 Forest Ave, Tankersley Hall. Our Speaker: Lynne Gallagher, all about Bees (*see page one for details*).
- ♦ **Friday, January 20, 9:30 a.m.—Green Thumb**, Centerpiece and/or Garden Art, Hosted by Natalie Harlow at 387 Cypress Drive, #9, Laguna Beach, 714-767-7236 (materials required—see page two for details).
- ♦ **Monday, January 23, 9:30 a.m.—Board Meeting**, Hostess: Jeanne Yale, 502 Pearl St., L.B. 497-9400. Committee chairpersons welcome.
- ♦ **Friday, January 27, Membership Tour & Travel Tour combined**—meet at First Church of Christ, Science, parking lot (at the corner of High Dr. and Rose Place) to car pool. **NOTES:** \$3.00 admission at Sherman Gardens & we will lunch out (*see page three for details*).
- ♦ **Next month is our Silent Auction for Valentine Planters.**

