



The Orange County Great Park

will transform the former El Toro Marine Corps Air Station into one of America's largest metropolitan parks.

Monthly Meeting
Neighborhood
Congregational Church
340 St. Ann's Dr.,
Laguna Beach
Social 9:30 a.m.
Meeting: 10 a.m.—Noon.



**Bring lots of
plants, pots, and
misc. items to sell
on this first Plant
Table Sale of the
year!**

Welcome



New Member

Marion Rice

For several decades, a wide range of organizations — including The Irvine Co., The Nature Conservancy and The Laguna Canyon Foundation — have worked to preserve open space and habitat throughout our area. Together, these groups have made remarkable progress toward safeguarding a vast open space for future generations.

The Great Park Corporation polled the Orange County community asking what residents wanted to be included at the Great Park.. Eight ideas stood out:

1. **Think Globally, Act Locally** – The Great Park should attract visitors from around the world, but fulfill the recreational needs of Orange County.
2. **Strong Support for a Mix of Active and Passive Uses** – Lakes, gardens, picnic areas, hiking, biking and jogging trails rank high. Facilities for amateur outdoor sports have a lower priority, but residents desire both.
3. **No Single Theme Should Dominate the Great Park** – Stakeholders and residents be-

lieve the park is large enough to feature several themes. The top three themes that emerged were: a town square for Orange County, celebrating the history of Orange County, and honoring the veterans.



4. **The Great Park should be a Place for Arts and Culture** – Outdoor art, sculpture, and traditional museum facilities are popular ideas.
5. **Keep it Open Day and Night** – Provide venues for outdoor concerts and evening activities. Create an environment that has good lighting and security.
6. **Green is Good, but Keep it Accessible** – Create a park with an internal transportation system that limits automobile traffic but allows for easy accessi-

bility to all areas of the park.

7. **Don't Compete with Disneyland** – Orange County has many commercial entertainment venues; more are not needed. In terms of amenities, cafes and "low key" facilities are preferable.

8. **Give it Time to Grow** – Residents and stakeholders want to allow enough time to create a well-planned and inclusive Great Park. They want flexibility included in the design process to accommodate changing needs and tastes.

We are doubly fortunate to have both the Conservancy Director Rick T. Hume, ASLA, and Peggy Goldwater Clay, the Conservancy Public Relations Consultant to tell us just what's going on today and what the Great Park will have to interest you!

We already know there is a botanical garden in those plans and the board of has voted to bring before the members a vote to pledge \$5000 toward the construction of the Botanical Garden.

LBGC

Directors

2007—2008

Gayle Whitaker
President

Nancy Lawrence
1st VP, Programs

Arline Moran
2nd VP,
Publicity/Web site

Dee Koski
3rd VP, Ways & Means

Nancy Englund
3rd VP, Garden Tour

Polly Dix
4th VP, Membership

Cheryl Begley-Bostwick
Recording Secretary

Jeanne Yale
Corresponding Secretary

Pam Luttrell
Newsletter

Dixie Henry
Treasurer

Vernetta Crandall
Financial Secretary

Joyce Conway
Immediate Past President



Garden Tour 2007



Hooray, let's hear some applause for all the hard working members who volunteered to make the 2007 Garden Tour a

huge success! Meanwhile, Nancy Englund is selecting her committee for the next Garden Tour in 2008, which she will be planning for Emerald Bay

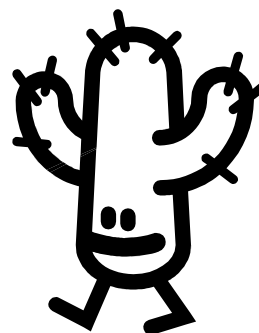
Green Thumb and Members Tour combine for a Fun Friday!

On Friday, September 21 from 10 a.m. to 1 p.m. Madeleine Visca and Nancy Englund will combine the **Members Tour and Green Thumb** to offer you an opportunity to create a succulent planter right at the source.

Choose and purchase your favorites from Dan's huge inventory. You may bring your own container or purchase one. There will also be available plastic shell planters, focal points and top

dressings to purchase for those who wish to plant mermaid gardens. We will meet at **Laguna Canyon Cactus and Succulents**, 21065 Raquel Rd. just off Laguna Canyon Rd. at 10 am

Don't forget your checkbook!



Weeder's Digest is published monthly from September through May for the members of the Laguna Beach Garden Club.

Pam Luttrell, Editor

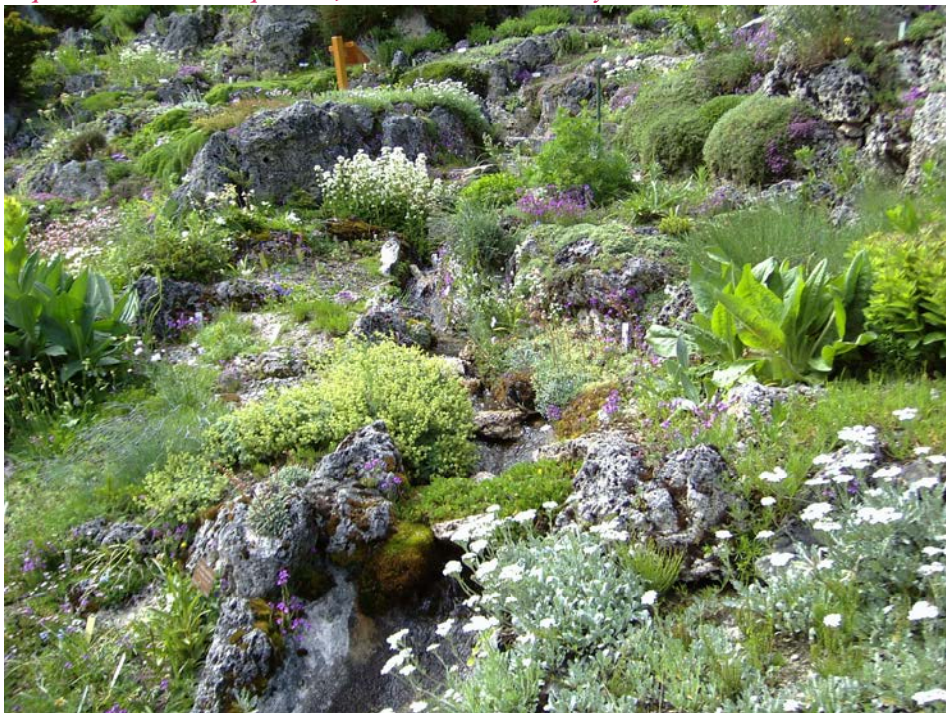
Additional information about club activities is available at our web site



www.lagunabeachgardenclub.org

Gardens in your Travels...

Alpine Garden in Champex-Lax, Switzerland submitted by Arline Moran



Have you traveled this year? Was there a garden or maybe several gardens you toured in those travels? Please share with us your favorite pictures, a few words about where the garden is located and what made it special to you. We would like to make *Gardens in Your Travels* a part of our monthly newsletter this year. So if you want your "vacation garden" featured please **email your picture and "travelogue" to: Pam Luttrell at pmluttrell@cox.net, or mail to: 25791 Delta Ave., Mission Viejo, 92691**

Letters to the editor...

Pam Luttrell is presently the editor of our newsletter, *The Weeders Digest*. She joined the Garden Club in 2005 and has been busy ever since. For the past two Garden Tours she and Nancy Englund have worked together to create the Garden Tour brochure, and all the printed materials needed for promoting the Laguna Beach Garden Tour. She produced the 2006-2007, and the new 2007-2008



Membership book.

What does she do in her spare time? Well, she loves to garden, a trait she acquired from her grandmother. Pam and her husband John live in Mission Viejo and have a sizable lot; on which they have planted black berries, strawberries, and blueberries; plus Apple, Fig, Avocado, Peach, Asian Pear, Apricot, Plum and Pomegranate trees. Every spring she plants an

Membership Coffee



The annual Membership coffee is the time we look forward to the new year, bring our friends who are prospective new members and catch up with old friends over coffee and brunch fare. The Board members will be providing the refreshments. The new Year-books for 2007-2008 will be



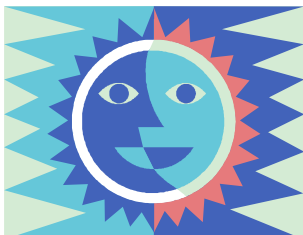
available at the membership table, so don't forget to pick yours up!



1100 square foot vegetable garden, with their harvest they either can, freeze or make jam out of it.. Her friends rave about the jalapeno jelly she makes.

She says she should have been a farmer's wife, since in addition to gardening, she loves to cook, sew, knit, crochet, quilt, or just about anything crafty! Since joining the Garden Club, thanks to the Green Thumb forum she has added making mosaic pots to her skills and is looking forward to crafting with the "green thumb ladies" again this year.

Sunshine request...



Our Sunshine chairperson, Shirley Forden would like you to please contact her if you know of a member who might need a little cheering up—a *little sunshine*—because of illness or other frailty and she will write the member a little note to let them know we are thinking of them. Call Shirley @494-6118

*On her long journey
The Monarch finally
rests*

In a spider's web



~Nancy Englund

Of Interest to Gardeners

Roger's Gardens

Sept. 8, 9 am—Growing Plumerias—*South Coast Plumeria Society*

Sept. 22, 9 am—“Designing with Succulents”, with Debra Lee Baldwin. Book signing will follow.

Oct. 6, 9 am—October in your Garden with Ron Vanderhoff.

2301 San Joaquin Hills Rd
Corona del Mar, California 92625
949-640-5800

Fullerton Arboretum

Sept. 8 & 9 from 10 am to 4 pm—*Salvia Spectacular Plant Sale*

(714) 278-3407

farboretum@fullerton.edu

The Laguna Nursery

Internationally known landscape architect Ruben Flores is re-opening **The Laguna Nursery** (1370 So. Coast Hwy) We've seen everything from tiny to gigantic plants moving in over the past week or so. You might just find that perfect plant for your yard, so stop by, take a look. Landscape design by Ruben Flores is featured in our book “*The Secret Gardens of Laguna Beach*”



Club and District Dates to Remember in September

- ♦ **Friday, September 14, 9:30 a.m.**—LBGC Membership Coffee & monthly meeting, at Neighborhood Congregational Church, St. Ann's Drive & Glenneyre, Laguna Beach. Peggy Goldwater Clay & Rick Hume speakers, see page 1.
- ♦ **Friday, September 21, 10:00 a.m.**—Green Thumb and Nursery Hoppers Tour combined, meet at *Laguna Canyon Cactus & Succulents*, 21065 Raquel Road at Laguna Canyon Road.
- ♦ **Monday, September 24, 9:30 a.m.**—LBGC Board meeting, Hostess Pam Luttrell, 25791 Delta Ave., Mission Viejo. Committee Chairs welcome.